

Eagle

Volume 18 Issue 3

10th Annual IRS & Friends West Golf Tournament

June 2012

Inside This Issue

| | |
|---|-----|
| President's Message | 1 |
| Red Rock Casino Info | 2-3 |
| Bears Best Las Vegas/TPC Las Vegas Info | 4-5 |
| Starting Sheet | 6 |
| Tournament Info, | 7 |
| Schedule of Events | 8 |
| Club Glove Special Offer | 9 |

ALSRI Members survive TPC Sawgrass last month!



Victor Vannukul, far right, joined force with Bryan Inoue, former ALSRI officers and the current SBSE Area Director, Debbie Nolan, former LB&I Commissioner and John Petrella, former LB&I Industry Director, to play TPC Sawgrass days after it hosted the Players' Championship. This event is named "LMSB Golf Classic" which had an inaugural event last year in Orlando, FL. Other ALSRI members tag along in this event are Frank Wun, Larry Taylor, Nick White, Bill Kim, Scott Schmidt and Rich Brawley. This year low net winner is Bennie Novicki, standing far left, former President of ALSRI Golf Club who is retired from the IRS and is now living in Virginia. Just don't ask Bennie his winning scores...lol!

MESSAGE FROM THE PRESIDENT

ALSRI GOLF CLUB CELEBRATES IRS WEST X IN LAS VEGAS!!

Welcome to the 2012 IRS and Friends West Coast Golf Tournament! Our Tournament Director, Victor Vannukul, has worked tirelessly to provide the best golf and family experience for you in Nevada over the past 10 years. The result is a superior event with hotel accommodations at the premier Red Rock Resort and Spa and golf at 2 of the best courses in Nevada – Bear's Best and TPC Las Vegas.

Although Red Rock imposed a \$25 resort fee per person beginning this year, you will still find that you are getting both a superior golf experience and vacation for significant others and family members for a package price that cannot be beat by any

other golf organization similar to ours that are holding similar events.

In this addition of the Eagle newsletter, you will find information that you need regarding events taking place at the Red Rock Resort and Spa, as well as golf information at Bear's Best and TPC Las Vegas during your stay next week.

On behalf of Victor and the entire ALSRI Golf Club Board, thank you for participating in this year's event and for many years to come! We look forward to seeing you there!

/s/ Stephen Klotz

Club President ALSRI Golf

- Cocktail Reception at 6:00P @ Victor's Suite (18th or 19th floor).
- Driving Range is Open at 6:15 A.M. on Monday & Tuesday
- 7:30P A Private Texas Hold'em Poker Tournament on Monday night @ Red Rock Poker Room (Tentative)
- Banquet Dinner @ 6:00P.M. on Tuesday night @ Red Rock's convention area - fifth floor.
- Your \$25 daily resort fee includes an access to the Red Rock's Spa, in room Wi-Fi and daily newspaper. Our guests get 20% off all spa services.

Red Rock Casino, Resort and Spa Information
11011 W. Charleston Blvd., Las Vegas, CA 89134 (702) 797-7777
Www.redrocklasvegas.com

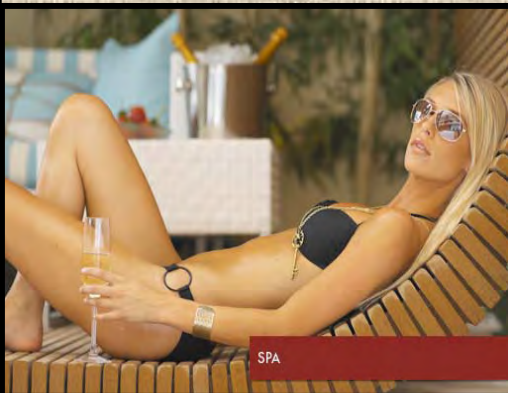
Directions:

From Los Angeles, I-15 to I-215 West for approx 12 miles to Charleston Exit. Hotel is on your right (Please use East Garage when checking-in. It's the closest garage to the hotel lobby). Red Rock is located approx. 10 miles from the Las Vegas Blvd. Both tournament courses are located within 10 minutes of Red Rock Hotel.

From McCarran International Airport, take I-215 West to Charleston Exit. See below Complimentary Shuttle Service info below.



POOL BACKYARD



SPA

Red Rock Complimentary Shuttle Service:

AIRPORT to RED ROCK (Picks up from Level Zero (0), down the glass elevators located between north and south baggage claim areas) 8am, 10am, 12pm, 2pm, 4pm, 6pm, 8pm, 9pm. Estimated travelling time is 30 minutes.

RED ROCK to AIRPORT (drops off at the departures level) 7am, 9am, 11am, 1pm, 3pm, 5pm, 7pm.

FASHION SHOW MALL to RED ROCK (Picks Up at Valet Circle on Fashion Show Drive) 11:40am, 1:40pm, 3:40pm, 5:40pm, 7:40pm, 9:40pm (15 minutes)

RED ROCK to FASHION SHOW MALL (departs from Red Rock Valet) 11:10am, 1:10pm, 3:10pm, 5:10pm, 7:10pm, 9:10pm

Guest Room Amenities:

- Down Comforter
- Flat screen TV
- Marble accented bathroom
- Free In room WI-FI Service

**Entertainment & Other service:**

- 72 lanes bowling alley
- Kid Zone/Game Area
- 20 screens Regal Theatre
- Great Pool area for adults and kids
- Full Service Spa



KING

Dining Options:

- Hachi (Modern Japanese Restaurant)
- T-Bone (Prime Steakhouse)
- Terra Rosa—Fine Italian Restaurant
- Cabo—Mexican Restaurant
- LBS—The Burger Joint
- Grand Café (24 hours coffee shop)
- The Yardhouse (Sport Bar & Micro Brewery) -
- Feast Buffet (Breakfast, Lunch and Dinner)
- Food court
- 2 Starbucks Coffee Bar



CABO MEXICAN RESTAURANT



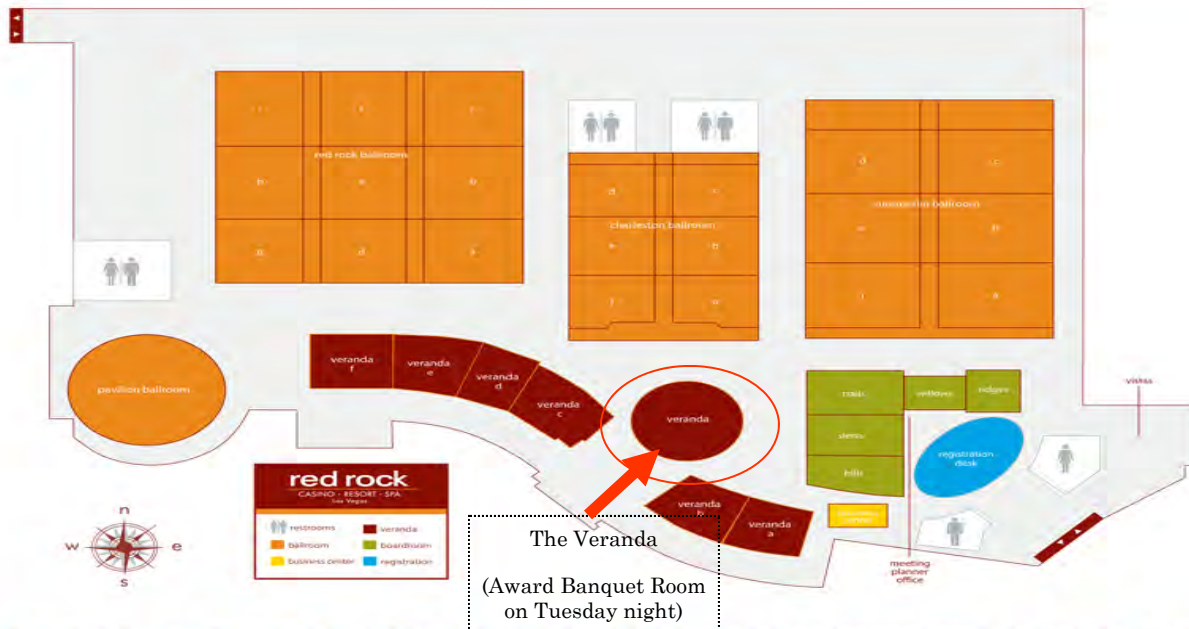
LUCKY BAR

Red Rock Casino, Resort and Spa Information

GROUND FLOOR



5TH FLOOR Meetings and Events



Bear's Best Las Vegas

Bear's Best Las Vegas

11111 W. Flamingo Road,

Las Vegas, NV 89135

702-605-0649

www.clubcorp.com/clubs/bear-s-best-las-vegas



Course Details

| Tee | Slope | Rating | Yardage |
|-------|-------|--------|---------|
| Gold | 147 | 74.0 | 7194 |
| Blue | 130 | 71.3 | 6628 |
| White | 122 | 68.3 | 6043 |
| Red | 116 | 68.7 | 5043 |

A Jack Nicklaus golf course like no other, Bear's Best Las Vegas is an upscale, daily fee public Las Vegas golf course offering a world-class private club experience in a public facility focused on corporate entertaining, golf outings, and other private events. To create this masterpiece of a Jack Nicklaus golf course, Jack Nicklaus himself hand selected 18 holes from his more than 200 phenomenal course designs worldwide, encompassing all of his favorites into one extraordinary round of golf. With manicured bent grass greens, challenging and varied hole designs, and immaculate fairway/tee complexes (overseeded in winter to ensure optimal conditions year-round), Bear's Best offers the best conditions in Las Vegas.

TPC Las Vegas

TPC Las Vegas

9851 Canyon Run Drive,

Las Vegas, Nevada 89135

702-256-2000

www.tpc.com/lasvegas

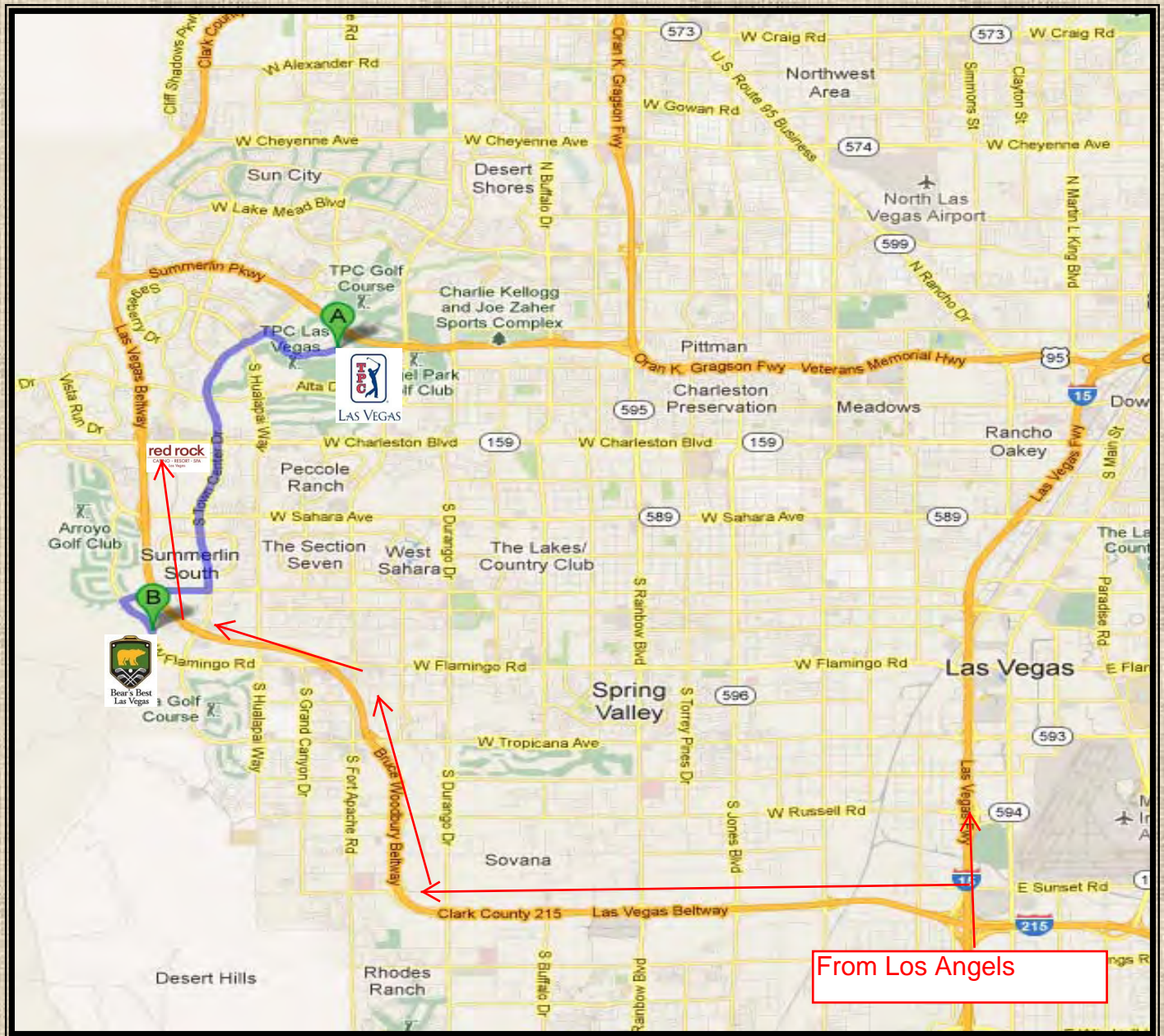


| Tees | | Par | Rating | Slope | Yardage | | | | |
|--------------|-----|-----|--------|-------|---------|-----|-----|-----|-----|
| TPC | | 71 | 73.4 | 136 | 7080 | | | | |
| Blue | | 71 | 71.0 | 128 | 6769 | | | | |
| White | | 71 | 68.1 | 126 | 6047 | | | | |
| Red - Ladies | | 71 | 67.8 | 117 | 4963 | | | | |
| Front | 1 | 2 | 3 | 4 | 5 | 6 | 7 | 8 | 9 |
| TPC | 359 | 196 | 466 | 544 | 378 | 604 | 209 | 458 | 349 |
| Blue | 349 | 184 | 452 | 518 | 363 | 590 | 195 | 433 | 337 |
| White | 315 | 151 | 364 | 471 | 353 | 551 | 169 | 376 | 308 |
| Men's HDCP | 17 | 5 | 1 | 11 | 15 | 9 | 7 | 3 | 13 |
| Men's Par | 4 | 3 | 4 | 5 | 4 | 5 | 3 | 4 | 4 |
| Women's Par | 4 | 3 | 4 | 5 | 4 | 5 | 3 | 4 | 4 |
| Women's HDCP | 15 | 9 | 5 | 3 | 11 | 1 | 17 | 7 | 13 |
| Red - Ladies | 269 | 110 | 323 | 429 | 255 | 439 | 118 | 297 | 248 |
| Back | 10 | 11 | 12 | 13 | 14 | 15 | 16 | 17 | 18 |
| TPC | 419 | 444 | 145 | 439 | 365 | 612 | 202 | 443 | 448 |
| Blue | 406 | 428 | 134 | 396 | 356 | 598 | 185 | 424 | 421 |
| White | 367 | 362 | 118 | 364 | 339 | 531 | 160 | 390 | 358 |
| Men's HDCP | 12 | 4 | 18 | 2 | 16 | 6 | 14 | 8 | 10 |
| Men's Par | 4 | 4 | 3 | 4 | 4 | 5 | 3 | 4 | 4 |
| Women's Par | 4 | 4 | 3 | 4 | 4 | 5 | 3 | 4 | 4 |
| Women's HDCP | 10 | 6 | 16 | 8 | 12 | 2 | 18 | 4 | 14 |
| Red - Ladies | 279 | 331 | 94 | 297 | 275 | 479 | 103 | 335 | 282 |

Tournament Players Club Las Vegas is "desert elegance" on display. From the stunning backdrop of Red Rock Canyon to the rugged natural landscape, [TPC Las Vegas](http://www.tpc.com/lasvegas) golf course (formerly known as TPC Canyons) offers a test to the most seasoned of golfers. This is the premier PGA TOUR facility in Las Vegas making it a destination for celebrities and PGA TOUR players alike. It's no wonder the golf course has been heralded by Golf Digest as one of the "Best Places to Play."

The Bobby Weed and Raymond Floyd design is a par 71, 7,063-yard golf course that will test your skills while dazzle you with views of the surrounding mountains, canyons and the famed Las Vegas skyline. Your shotmaking ability is put to the test early in your round on the par-3 second hole (appropriately named "Canyon"). You will need to carry your tee shot almost 200 yards from the tips to an island-like green in the middle of the desert..

Map of Las Vegas: Red Rock Casino, Bear's Best Las Vegas and TPC Las Vegas



Driving directions to Bear's Best Las Vegas from Red Rock Casino (3.4 Miles, 9 minutes):

1. Head East on W. Charleston Blvd., toward S Pavilion Center Drive
2. Turn RIGTH onto S Center Drive
3. Stay left on S Center Drive and turn right onto W Desert Inn Road
4. Turn left onto W Flamingo Road, Bear's Best GC on the right

Driving directions to Bear's Best Las Vegas from Red Rock Casino (3.3 Miles, 8 minutes):

1. Head East on W. Charleston Blvd., toward S Pavilion Center Drive
2. Turn LEFT onto S Center Drive
3. At the SECOND traffic circle, take 1st exit on right onto Canyon Run Drive
4. TPC Las Vegas on right.

7:30A Modified Back-Nine SHOTGUN Start

(The Assigned Holes Below are Tentative and Subject to Change)

| Bear's Best June 11, 2012 | TPC Las Vegas, June 12, 2012 | Player1 | Player 2 | Player 3 | Player 4 |
|------------------------------|---------------------------------|-------------------|-----------------|--------------------|--------------------|
| TBD | 1A | Jim Belcher | Steve Miles | David Johns | Richard Wong |
| TBD | 1B | John Freeman | Norm Light | Marc Martin | OPEN |
| TBD | 18A | Larry Taylor | Dennis Murakami | David Vicente | Archie Nakaoka |
| TBD | 18B | Mike Yi | Tim Baldwin | Howard Wu | Bernard Penafuerte |
| TBD | 17A | Tavy Guzman* | Bennie Novicki | Frank Wun* | Victor Vannukul |
| TBD | 17B | Ralph Collinson | Jim Needham | Dominic Cardo | Rick Fratanduono |
| TBD | 16A | Eugene Murphy | Rich Kraus | Rick Palamara | OPEN |
| TBD | 16B | Brent Cook | Chris Darling | Leo DeLosSantos | Terrell Taylor |
| TBD | 15A | Mark Zuverink | Bill Roberts | Glen Fitz | Rocky Quintana |
| TBD | 15B | George Nichols | Steve Nichols | Ward Forrest | John Chabala |
| TBD | 14A | Jin Yang | Lee Robinette | Darrell Graham | Darrell Kinard |
| TBD | 14B | Jim Muratore | Jimmy Muratore | Frank Muratore | Scott Schmidt |
| TBD | 13A | Augusto Rodriguez | Irene Rodriguez | Ed Chavez | Frank Rivera |
| TBD | 13B | Jerry Stang | Edd Shoemaker | Steve Klotz | George Murphy |
| TBD | 12A | Gary Anderson | Rick Sackett | Rich Brawley | Joe Zamberlan |
| TBD | 12B | John Niederst | John Leahy | Greg Edgar | OPEN |
| TBD | 11A | Glen Lester | Ron Nestor | Bill Gray | John Sanchez |
| TBD | 11B | Richard Tsuchida | David Tsuchida | Gerardo Carranza | OPEN |
| TBD | 10A | Tim Forrest | Al Biernesser | Cliff Toyama | OPEN |
| TBD | 10B | Manuel Puente | Juan Escalera | Juan Escalera, Jr. | OPEN |
| TBD | 9A | Roger Law | Jim Judd | Craig Weaver | OPEN |
| TBD | 9B | Denise Bergsrud | Bert Bergsrud | John Kelly | Tom Veatch |

* Play on Monday at Bear's Best Only.

Monday, June 11th: Bear's Best Las Vegas— Men: White Tee, Women: Red Tee

Tuesday, June 12th: TPC Las Vegas— Men: Blended Tee, Seniors: White Tee, Women: Red Tee

Competing Flights & Index (Handicap)

Index

IRS Employees & RETIREES Flights:

Men (Tentative Spread)

- A Flight: 0-13.9
 B: 14.0–17.9
 C: 18.0–25.5
 D: 25.6 and above

Ladies: Open

Men—Friends, Family and Guest Flights:

(Tentative Spread)

Use Calloway System. Will split players evenly among three flights

- A Flight: 0-14.9
 B Flight: 15.0– 18.9
 C Flight: 19.0–25.9
 D Flight 26.0 and above Ladies: Open

Men: Use Blended Tee—@ TPC
 White Tee @ Bear's Best

Ladies: Use Red Tee

Seniors (60 years and over) with index under 13.9, use White Tee,

(Tournament Format: Individual Stroke Play (NET) with Index

Important contact Info:

Victor's cell: 626-476-2439

Red Rock: 702-797-7777

Bear's Best Las Vegas: 702-605-0649

TPC Las Vegas: 702-256-2000

Email: waves3464@hotmail.com, Or
 Victor.V.Vannukul@IRS.Gov

Flights

For the members of IRS L.A. Golf Club, ALSRI Golf Club. We will use your June 2012 index for this event.

IRS Employees & Retirees:

For out-of-town IRS employees and Retirees, we hope to have your USGA index before the start of the tournament on Monday. If any of you have an established USGA index, please email them to Victor as soon as possible at either waves3464@hotmail.com or at Victor.V.Vannukul@IRS.Gov or you may give them to Victor, and/or other committee members during the pre-tournament registration on Monday morning. Players without established index, their index will be based on either prior year adjusted scores or index computed under Calloway system.

Friends, Family and Guests Golfers:

We will compute all Friends, Family and Guests golfers either by using prior IRSWEST tournament scores or Calloway Handicapping System (First year participants) unless they can demonstrated that they have established USGA index from his/her own club. If any of you have established USGA index, please email them to Victor at either waves3464@hotmail.com or at Victor.V.Vannukul@IRS.Gov or you may give them to Victor, and/or other committee members during the pre-tournament registration on Monday morning.

The tournament committee reserves the right to adjust the index of players who don't have an established USGA index. Your final designated competing flight could be different from the designated flight given to you at the beginning of the tournament.

Prizes & Awards

IRS Employees & RETIREES Flights:

Men with USGA index:

A, B C & D Flight: 1st, 2nd & 3rd place trophy

Ladies (EMPLOYEES, RETIREES & GUESTS

Combined)

1st Place Trophy

Men—Friends, Family and Guests:

A, B & C Flights: 1st, 2nd & 3rd place trophy

Closest to Pin: (All participants):

All par 3s

Combined Low Gross:

1st Place Employee

1st Place Friends, Guest Family



Above—Red Rock Casino and Resort's
 Luxury Lobby

Schedule of Events

Sunday, June 10, 2012

Check-in at Red Rock Casino, Resort and Spa at your leisure.

6:00– 9:00P.M. ALSRI President Welcome Party

ALSRI Golf Club President, Stephen Klotz, will host a reception party at Victor's Suite on the 18th or 19th floor (Under Victor Vannukul's Name) from 6:00—9:00P.M. Please come join us for beer, wine, soft drink and delicious appetizers and chance to meet other participants.

Meals: Except for banquet dinner on Tuesday night, you are on your own for the four days. There are many restaurants located inside Red Rock including the Grand Café' which open 24 hours. You can also find many restaurants on Charleston Avenue. **At the nearby Rampart Casino, you can get a special breakfast for \$3.99 with if you have its player's card.**

Please remember to arrange a wake-up call for the next day's golf!

Monday, June 11, 2012—Bear's Best Las Vegas

Breakfast on your own. It will take you approximately 10 minutes from Red Rock Casino to Bear's Best Las Vegas. Please consult with the driving directions to Bear's Best Las Vegas provided on page 4 of this newsletter in advance.

Bear's Best Las Vegas 's Driving Range will be open at 6:15A.M.

SHOT GUN start at 7:30A.M. (Modified back nine SHOTGUN Start). Please check the pairing sheet on page 6 for your exact starting hole. Please be ready at your cart no later than 7:15A. All Men play from the White Tee Marker. Ladies use Red Tee. Long Drive hole to be determined. Ball must be in fairway. Closest to Pin Contest are on all par 3s, Closest-to-the Pin markers are for both Men and Ladies combined!

After play, sign your scorecards and turn them in to a member of the Tournament Committee and/or Bear's Best Las Vegas 's tournament staff inside the Golf Shop at the course. **(Tournament Committee Members are as follows: Victor Vannukul, Larry Taylor, Howard Wu and Stephen Klotz).** All decisions on tournament play will be by Committee and their ruling is final.

Of course, the evening is on your own. **You might try to use Red Rock's Spa access to get some exercise, massage or other spa services. Our group get 20% off all spa services at Red Rock Spa. The daily access to the spa is included with your package fee.**

7:30P Poker Tournament (Tentative) :

We have not confirmed the availability of the poker room at this time. Will advise you of the details later this week. If you interested in playing this event, please check with Victor Vannukul.

Tuesday, June 12, 2012—Golf at TPC Las Vegas

Breakfast on your own. It will take you approximately 10 minutes from Red Rock Casino to TPC Las Vegas. Driving range is open at 6:15A.

TPC Las Vegas's Driving Range will be open at 6:15A.M.

Please check-in with the ALSRI Golf Club Table for your tournament gift (TPC Las Vegas Nike Golf Shirt). For those that specified their shirt size on their registration form, you will get the exact shirt size you requested. For other, you will get either Large or Extra Large size. No exchange will be allowed this year.

SHOT GUN start at 7:30 A.M. (Modified back nine SHOT-GUN Start). Please check the pairing sheet on page 6 for your exact starting hole. Please be ready at your cart no later than 7:15A. All Men play from the Blended Tee Marker. Ladies use Red Tee, Players 60 years and over use White Tee. Long Drive hole to be determined. Ball must be in fairway. Closest to Pin Contest are on all par 3s. Closest-to-the Pin markers are for both Men and Ladies combined!

Afternoon break and your leisure.

6:30 P.M. Banquet Award Dinner at Red Rock's Veranda Room located on the fifth floor. Open Bar starts at 6P.

Alcoholic Beverage on your own (Cash Bar). Dinner is a buffet style dinner. Awards and Prizes ceremony immediately after dinner.

Wednesday, June 13, 2012—Check Out

Check-out time is 12 P.M. Make sure that you gather all belongings before check-out. Have a safe trip home. See you all next year!!

Special Deal on Deluxe Golf Travel Bag From Club Glove Company

The Club Glove Company, the manufacturer of the most trusted travel golf bags among the PGA members where their products are seen on golf courses worldwide has offered to sell their most popular golf travel bags (Last Bags XL, Last Bag and Burst Proof II) directly to members and Guests of ALSRI GOLF CLUB at 40% discount over their suggested retail price. These bags are light weight, strong, ready to fly and come with limited lifetime warranty. ALSRI Golf Club has negotiated the exclusive deal where ALSRI Logo will be embroiled directly to the bag of your choice along with your name for an additional \$12. These bags come in 16 colors. The discounted price include a free shipping cost to your home. CA State Sales Tax is applicable for all order from California Residents. If you are interested in ordering one of these bags, please call Chad Welton of Club Glove at 714-843-9288 and let him know that you're part of ALSRI GOLF CLUB to get his special deal. For more info of the bag, go to www.clubglove.com.

| | | | | | |
|--|---|-------------------------------|--------------------------------------|-------------------------|------------------|
| Name: | | | | City: | State/Zip |
| Address: | | | | | |
| Type of Bag | Last Bag XL: \$229 (SRP \$329) | Last Bag: \$169(SRP \$299) | Burst Proof II: \$119 (SRP \$219) | Cost of Bag \$ _____ | |
| Custom Embroidery(\$12): | ALSRI LOGO | | | Name: | \$ 12 |
| Ship to: | Address: | | | | |
| Color (Circle One): | Express yourself in 16 standard colors! | | | | |
| 8.75% Sales Tax (CA Residents Only) | | | | | \$ _____ |
| Total | | | | | \$ _____ |

Golf's Best Travel Bags

integrates with *Train Reaction*

A. Last Bag[®] XL
54" H x 22" W x 19" D • 95 linear inches
TBLX #329 available in 16 colors (below)

B. Last Bag[®]
#1 travel bag on the PGA Tour
51" H x 19" W x 16" D • 86 linear inches
TBLB #299 available in 16 colors (below)

XL Large collapsible bag (11.2 lbs)
Large collapsible bag (10.6 lbs)
These premium travel bags accommodate nearly any golf bag and up to a 47" driver plus room for gear/luggage. 2 exterior shoe/storage pockets and includes set of lightweight zippered nylon shoe bags. XL is for extremely large tour bags. Made in USA. Limited lifetime warranty.
* 5-year NGA warranty available

C. Stiff Arm[®]
club protector
SASR1000 #2699

Eliminates nearly all risk of club breakage (U.S. Patent #5,739,208). (1.2 lbs) fully adjustable. 3-piece telescoping crutch fits all travel bags and adjusts to slightly longer than the longest club in the bag to protect clubs.
Custom embroidery available

90% Of All Tour Players Use These Bags

*Based on 2007 Darrell Survey results

Club Glove[®] Golf Travel Bags
The #1 Travel Bag On Tour

GOING GREEN
100% INNOVATIONS
MADE IN THE USA

- Single piece burst proof construction made with invisible™ CORDURA® brand 1000 d water resistant nylon fabric up to 3x stronger and lasts up to 6x longer than standard polyesters. 1600 d ballistic nylon base reinforcement
- Reliable and durable YKK® zippers and IIV Nexus® Buckles
- Patented high-impact plastic wheelbase with integrated support and in-line skate wheels and bearings for smooth and quiet transport (U.S. Patent D511, 043 S)
- Over the top zipper for easy loading
- Patented pending integrated carry handle integrates with Train Reaction™ (Patent Pending Ser# 12/348,857)
- Patented adjustable restraint device to secure golf club set (U.S. Patents #7,219,902; #7,188,714 and #6,901,995)
- ID card holder

D. Burst Proof w/Wheels II
#1 travel bag in collegiate golf
51" H x 15" W x 14" D • 80 linear inches
TBBW2 #219 available in 16 colors (below)

Premium fitted collapsible bag (8.0 lbs) is perfectly sized for most stand bags and built with the same high quality features as the Last Bag. Shoe pockets strategically located inside the bag. Made in USA. Limited lifetime warranty.
* 5-year NGA warranty available

PRO grade

TR5
Train Reaction SYSTEM

5x
STRONGER

3x
STROKER

See page 6 instructions

The Carry-On II is the perfect companion to our golf travel bags

Express yourself in 16 standard colors!

BUY AMERICAN
MADE IN USA

CORDURA brand

Used by more Touring professionals than any other product in golf 800.736.4568

CLUBGLOVE.COM USA